

EAST ALABAMA EMS, INC.
EAST ALABAMA REGIONAL TRAUMA SYSTEM REPORT
FY 2012 QUARTER ONE



January 19, 2012

East Alabama EMS, Inc.

East Alabama Regional Trauma System

System Status & Performance Dashboard



Table of Contents

Quarter 1 Synopsis.....	3
System volume to date – Oct. 6, 2009 thru December 31, 2011.....	4
System Volume - FY 2012 QTR 1	5
Call Origination by County - FY 2012 QTR 1	6
Entry Criteria Statistics -	7
Motor Vehicle Crash Statistics -	8
Patient Transport Mode - FY 2012 QTR 1	9
Patient Destination -	10
Patient Transfers -	11
Trauma System Patient Outcomes - FY 2012 QTR 1	12
QI/QA Issues.....	13
East Alabama Regional Trauma System Goals	14
Regional Trauma Advisory Committee (RTAC)	15

East Alabama EMS, Inc.

East Alabama Regional Trauma System

System Status & Performance Dashboard



Quarter 1 Synopsis

During this quarter, which encompasses October 1, 2011 thru December 31, 2011, 221 patients were entered into the system. This is a 5 percent increase from the same time last year. We shall continue to monitor these trends over time.

Motor vehicle crashes (MVCs) are still the leading cause of patient entry in the trauma system. Approximately 69 percent of patients entered this quarter are from motor vehicle crashes. The use of aircraft transport, 37 percent, was about the same as previous quarters.

55 percent of trauma patients from this region were treated by hospitals within the region. 33 percent of patients went to a Level 1 trauma center within the state. The other 12 percent went to a facility out of our region or out of state. Approximately 15 percent of patients were transferred from a facility within the region to a higher level of care. The vast majority of these were because EMS needed to get an unstable patient to the closest ER or aircraft were not able to fly at the time of the accident.

The trauma centers in the East Region are doing a better job of getting trauma patient reports returned. These provide us some information on patient outcomes. 89 percent of patients entered into the trauma system from Region 2 were admitted to various units and only 11 percent were discharged from the emergency department. This over-triage indicator is down from the previous quarter and far from the 40 percent benchmark that BREMSS (i.e. ATCC) uses for a need to review.

The number of QI reports was 10 percent of volume, but most related to communications. Those issues relate to the timing of patient entry or follow up. The QI/QA committee, chaired by Dr. Christen, meets monthly to discuss each issue, and seems to have a positive effect on better use of the system.

For more information, please contact us.

East Alabama EMS, Inc.
P.O. Box 700
58 Speedway Industrial Drive
Lincoln, AL 35096

205.763.8400
205.763.8402 Fax
eaems@centurytel.net
www.eastalabamaems.com

John E. Blue, II, CEO
E. Allan Pace, Trauma Coordinator

East Alabama EMS, Inc.

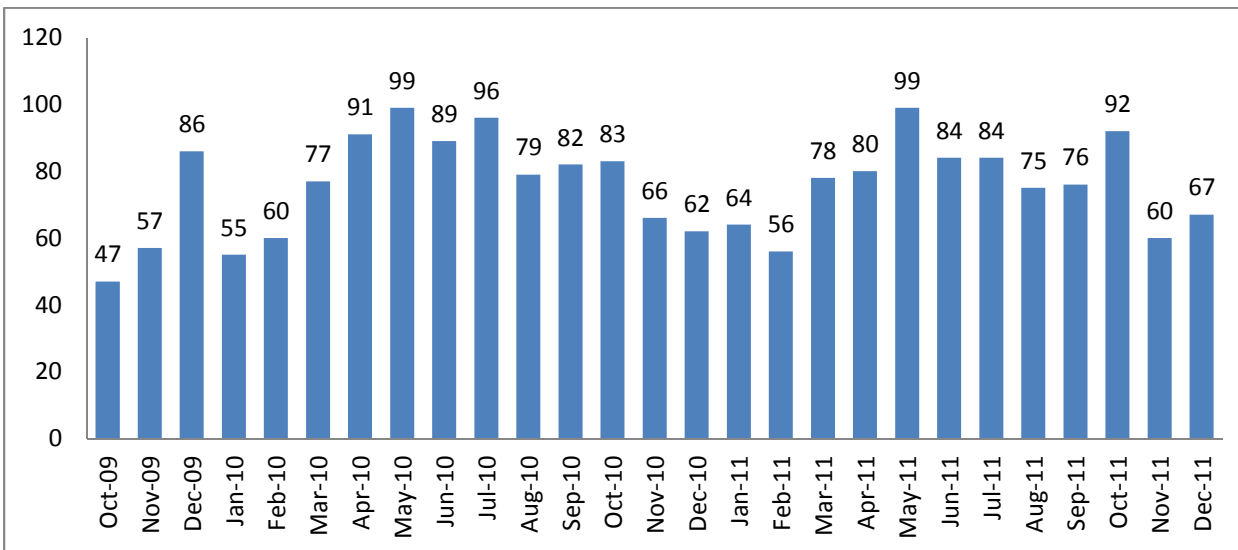
East Alabama Regional Trauma System

System Status & Performance Dashboard



System volume to date – Oct. 6, 2009 thru December 31, 2011

Total number of patients entered into the trauma system = 2,044



East Alabama EMS, Inc.

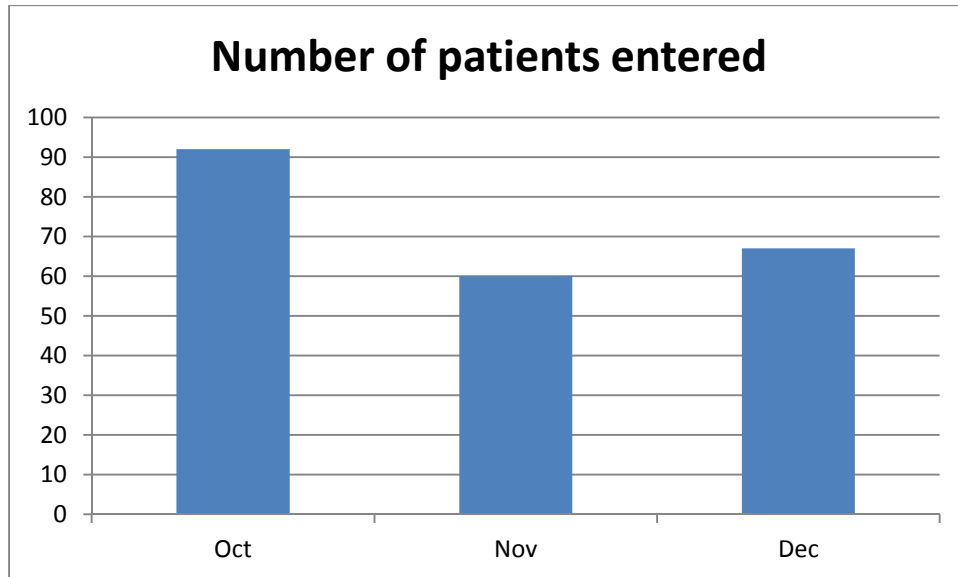
East Alabama Regional Trauma System

System Status & Performance Dashboard



System Volume - FY 2012 QTR 1 (Oct-Dec. 2011)

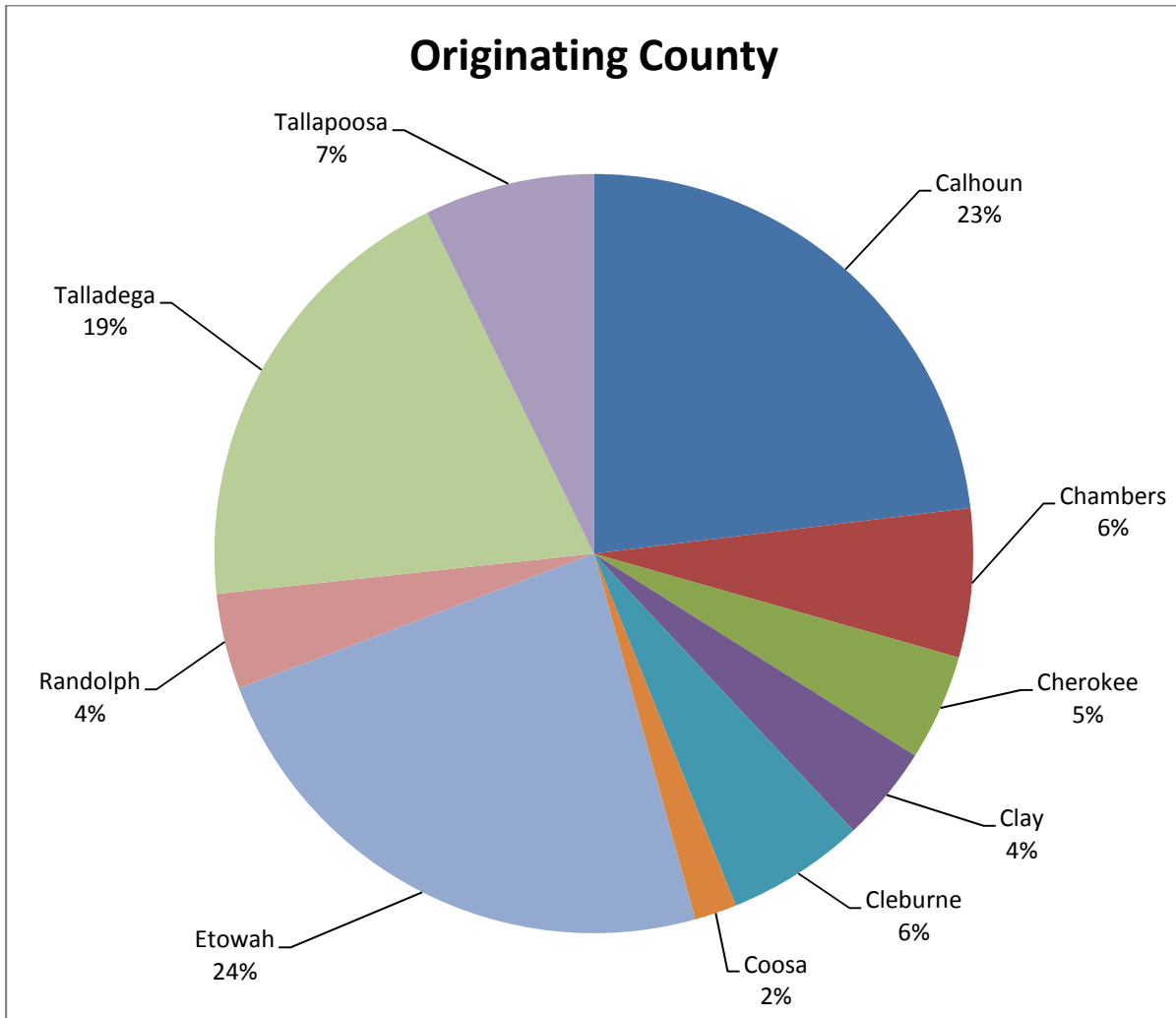
The total number of patients entered from this region into the Alabama Trauma System during this quarter was 221.





Call Origination by County - FY 2012 QTR 1 (Oct-Dec. 2011)

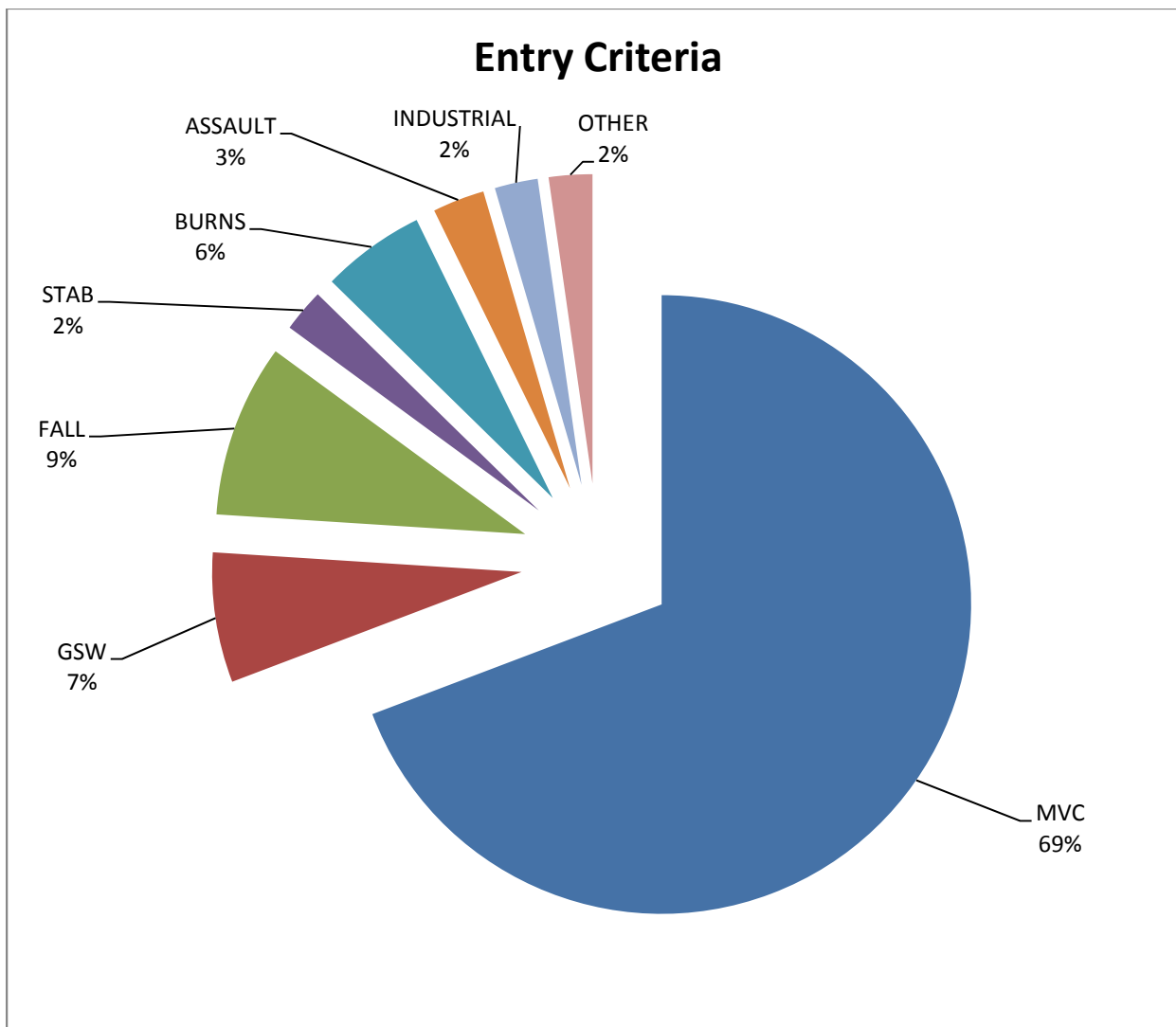
Originating county for Region 2 trauma system patients





Entry Criteria Statistics - FY 2012 QTR 1 (Oct-Dec. 2011)

Type of accident trauma patients were involved in that prompted EMS or hospital to enter them into the trauma system

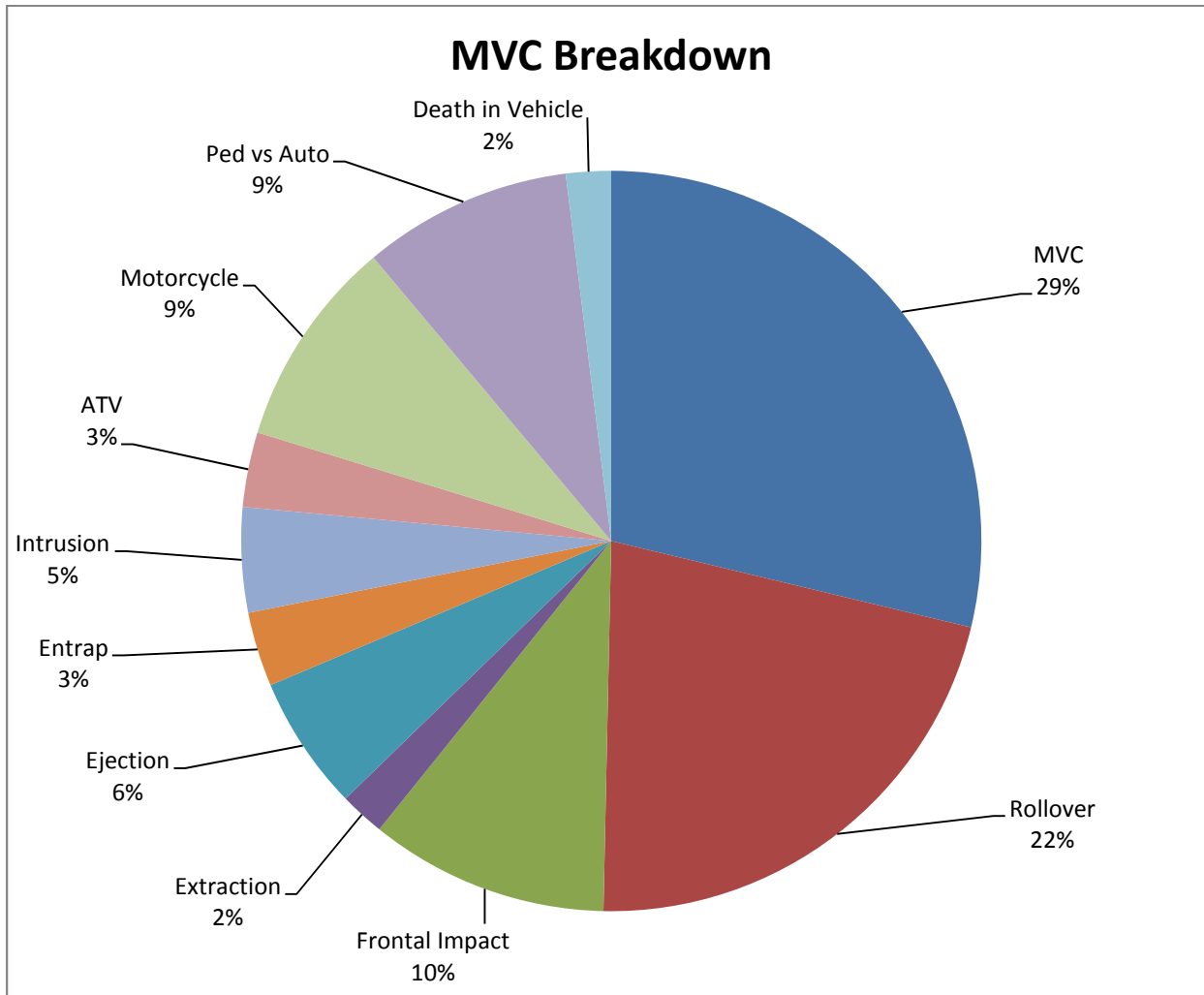


**OTHER: This entry criteria includes incidents such as football, skateboarding, etc.



Motor Vehicle Crash Statistics - FY 2012 QTR 1 (Oct-Dec. 2011)

Patients entered into the trauma system involved in a MVC



East Alabama EMS, Inc.

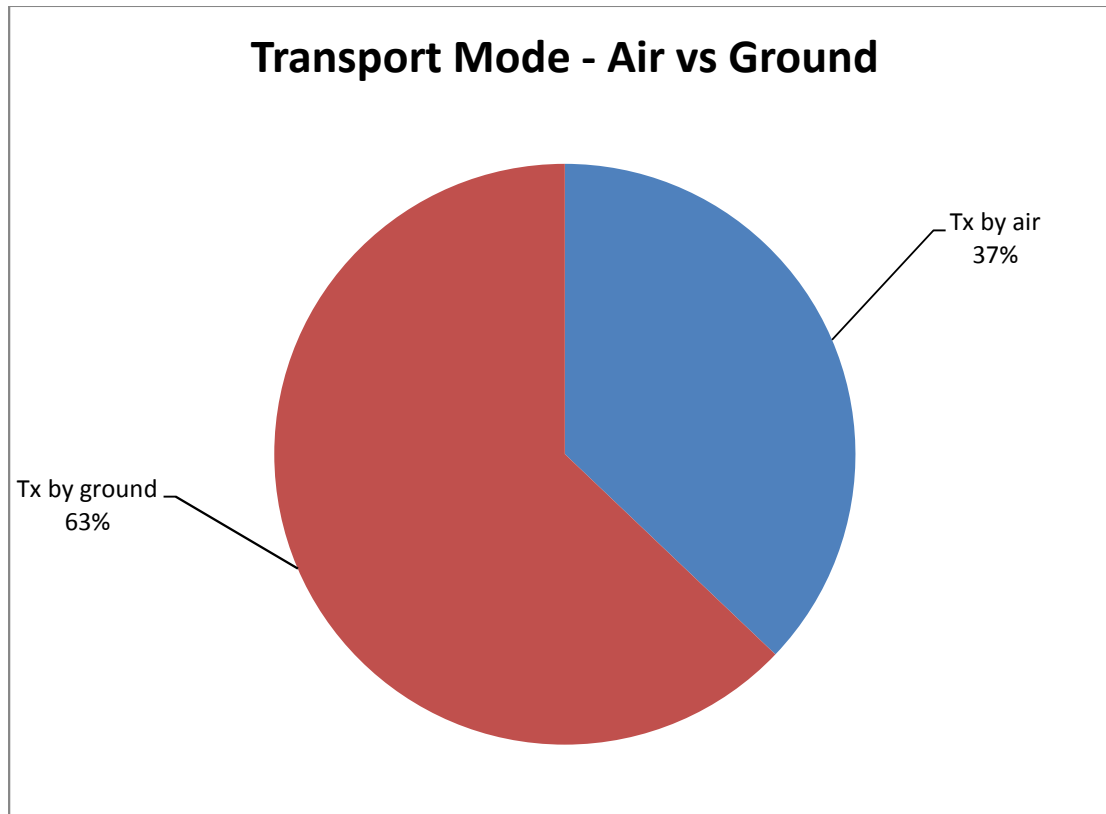
East Alabama Regional Trauma System

System Status & Performance Dashboard



Patient Transport Mode - FY 2012 QTR 1 (Oct-Dec. 2011)

Patients transported by ground units versus air medical units



East Alabama EMS, Inc.

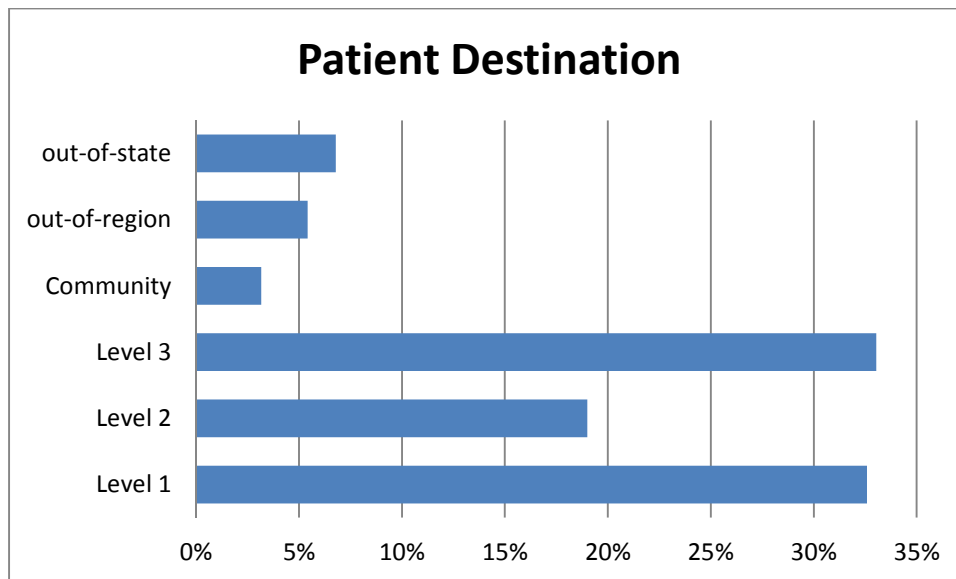
East Alabama Regional Trauma System

System Status & Performance Dashboard



Patient Destination - FY 2012 QTR 1 (Oct-Dec. 2011)

Trauma system patients from Region 2 transported to various hospital destinations



East Alabama EMS, Inc.

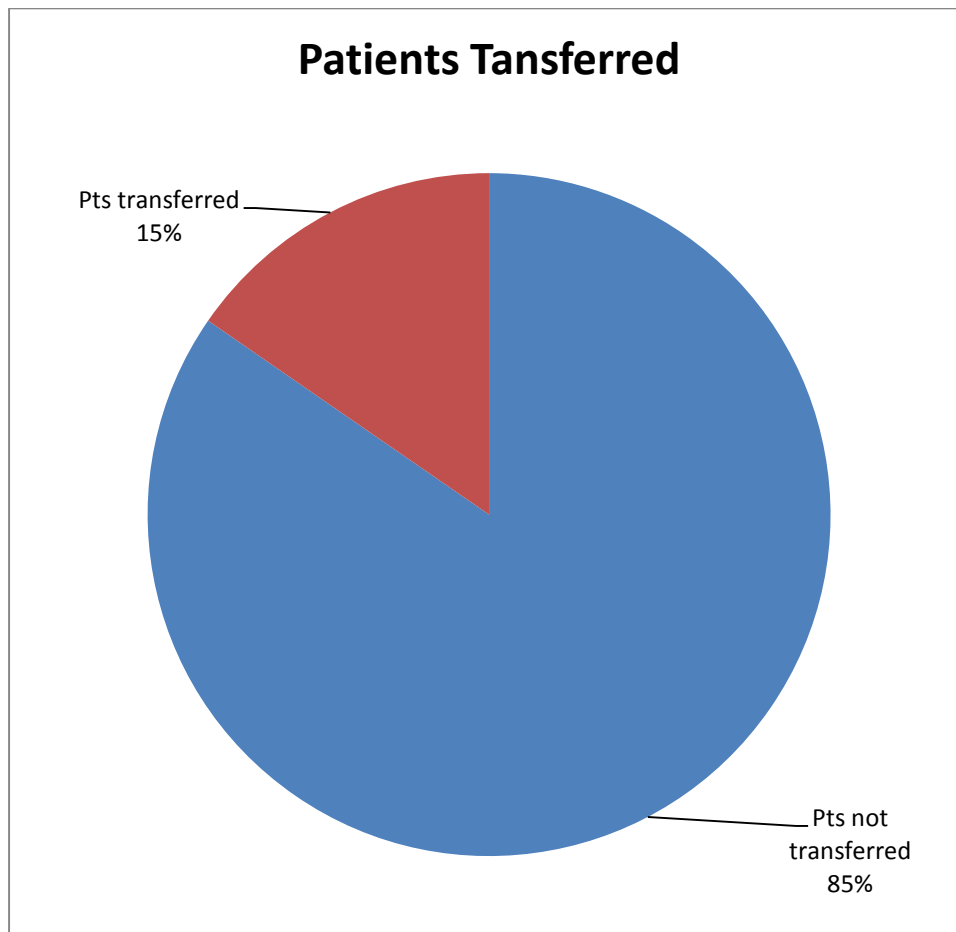
East Alabama Regional Trauma System

System Status & Performance Dashboard



Patient Transfers - FY 2012 QTR 1 (Oct-Dec. 2011)

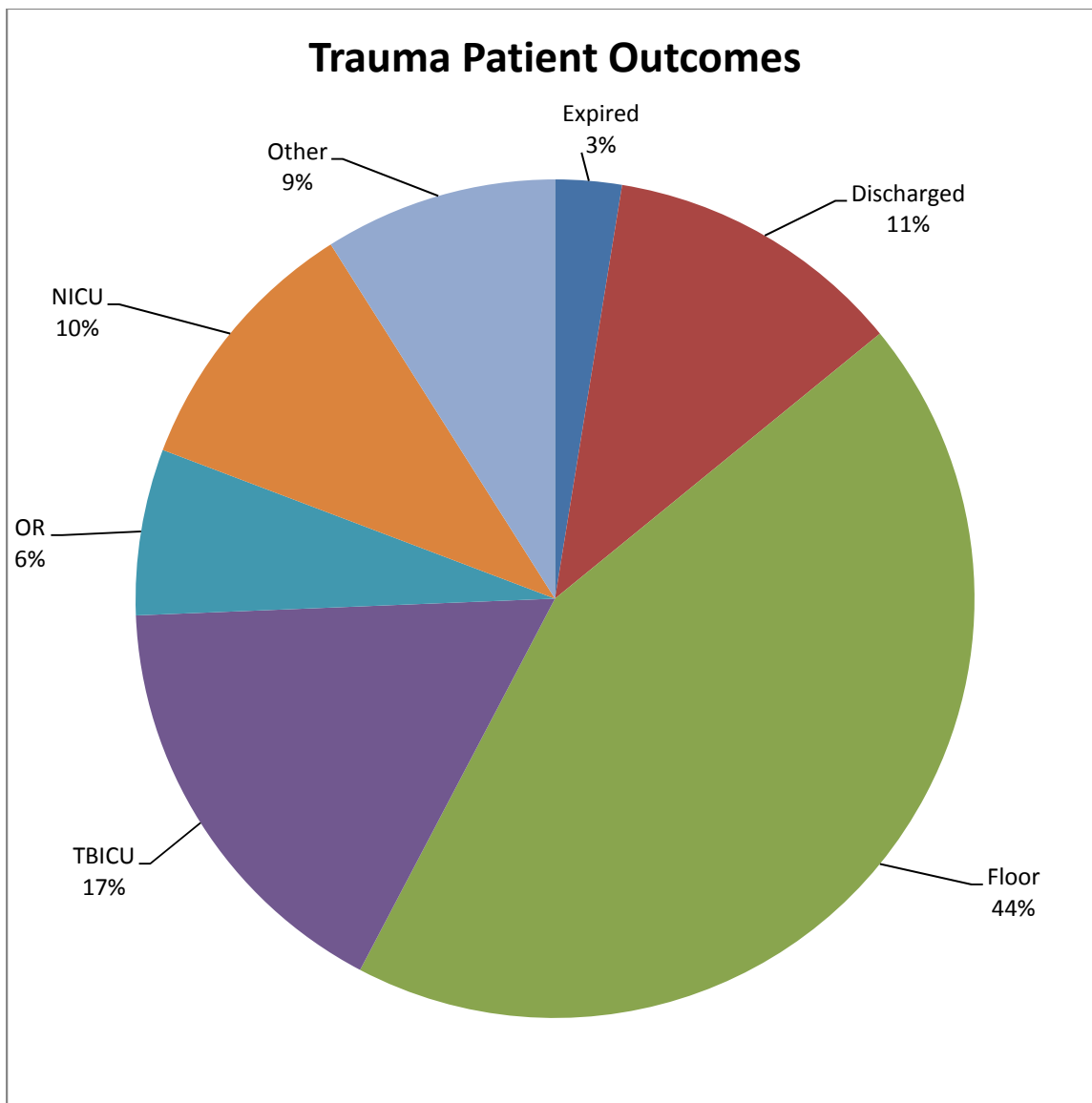
Trauma patients from Region 2 taken to a hospital within the region and then transferred to a higher level trauma center





Trauma System Patient Outcomes - FY 2012 QTR 1 (Oct-Dec. 2011)

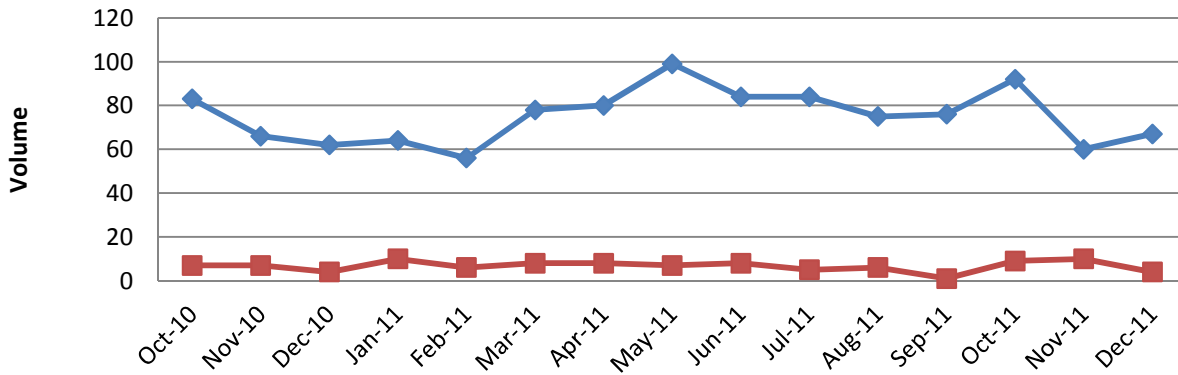
Of the total number of patients entered from Region 2, 52% of the trauma patient reports were returned.





QI/QA Issues

QI Trend vs Patient Volume



	Oct-10	Nov-10	Dec-10	Jan-11	Feb-11	Mar-11	Apr-11	May-11	Jun-11	Jul-11	Aug-11	Sep-11	Oct-11	Nov-11	Dec-11
# of pts	83	66	62	64	56	78	80	99	84	84	75	76	92	60	67
# of QI's	7	7	4	10	6	8	8	7	8	5	6	1	9	10	4

East Alabama EMS, Inc.

East Alabama Regional Trauma System

System Status & Performance Dashboard



East Alabama Regional Trauma System Goals

- 1) Monthly meeting of Regional Trauma QI/QA committee. Dr. Christen is the chairman.
- 2) Visit each trauma center in our region once per month.
- 3) Offer a trauma system training class each month.
- 4) Hold RTAC meetings once per quarter.
- 5) Present trauma system update at service provider meetings each quarter and have open discussion.
- 6) Establish relationship and coordination with Tanner Hospital System in West Georgia.
- 7) Assist ADPH and East Region trauma centers with re-evaluation process.

East Alabama EMS, Inc.

East Alabama Regional Trauma System

System Status & Performance Dashboard



Regional Trauma Advisory Committee (RTAC)

PHYSICIANS

Charles L. Newman, M.D., Chairman of East Alabama RTAC
Riverview / GRMC

Neil L. Christen, M.D., Vice-chairman of East Alabama RTAC
Regional Medical Director

Gordon T. Hardy, M.D.
Anniston Orthopedic Associates

Lucian Newman, III, M.D.
The Surgery Clinic, LLC

Steven A. Isbell, M.D.
Walker & Isbell PA

James G. White, III, M.D.
Northeast AL Neurological Services

Ron Shiver, M.D.
ED Medical Director
Lanier Health Services

John Valente, M.D.
Regional Medical Center

Michelle Goldhagen, M.D.
Russell Medical Center

Rodney Snead, M.D.
C.A.R.E.S.

David Roberts, M.D.
Citizens Hospital

East Alabama EMS, Inc.

East Alabama Regional Trauma System

System Status & Performance Dashboard



PHYSICIANS continued

Lewis Sellers, M.D.
Regional Medical Center

Henry Ruiz, M.D.
Ruiz Neurosurgery Clinic

Howard McVeigh M.D.
Chair, BOD East Alabama EMS

Buddy Smith, M.D.
Clay County Hospital

HOSPITAL REPRESENTATIVES

Patrick Trammell, CEO
Cherokee Medical Center

Linda Jordan, Administrator
Clay County Hospital

Glenn Sisk, CEO
Coosa Valley Medical Center

Stephen Pennington, CEO
Gadsden Regional Medical Center

Jim Edmonson, CEO
Jacksonville Medical Center

Agnes Wages, Administrator
Lake Martin Community Hospital

Doug Dewberry, CEO
Lanier Health Services

David McCormack, CEO
Northeast Alabama Regional Medical Center

Lloyd Ford, CEO
Riverview Regional Medical Center

East Alabama EMS, Inc.

East Alabama Regional Trauma System

System Status & Performance Dashboard



HOSPITAL REPRESENTATIVES continued

Jim Peace, Administrator
Russell Medical Center

Joel Taylor, Administrator
Citizens Baptist

Vacant at this time
Stringfellow Memorial Hospital

Richard Daniel, Administrator
Wedowee Hospital

PREHOSPITAL EMS REPRESENTATIVES

Shane Parker, EMT-P
LifeSaver/Omniflight

Matt Knight, EMT-P
Emergency Medical Transport

Johnny Warren
Anniston EMS

ADPH REPRESENTATIVE

Dr. Williamson (Dr. Crawford, State EMS Medical Director)